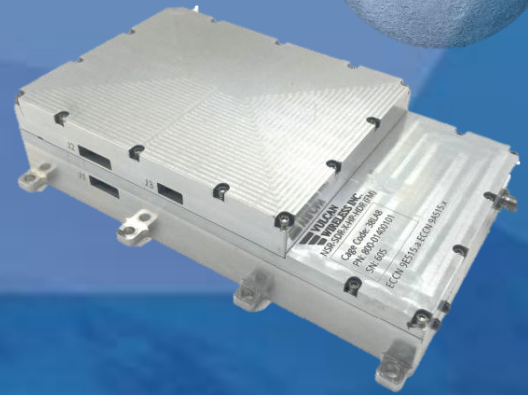




## Features:

- X-Band Transmitter-DVB-S2, S-Band Receiver (X-Band Optional)
- 10.0Watts Linear RF Transmit Power
- NASA NEN, SSC Space (USN), K-Sat
- NSA TSAB (Type-1) Encryption Option
- LEO, MEO, GEO, Cislunar and Lunar Surface Application



| Specification            | Value  | Comment  |
|--------------------------|--|--|
| Tx Power<br>7900-8400MHz | 10W Linear RF 0.25dB steps   | Integrated filters   |
| Waveforms<br>-Tx         | DVB-S2(X), 320Mbps   | FEC: CC1/2, LDPC, Turbo, DSN, Lunar, Others                            |
| -Rx                      | DVB-S2(X), 320Mbps/TCTM  | SSC-USA, K-Sat, AWS, Others  |
| Rx                       | 2025-2115MHz S-Band Rx (std)<br>6870-7200MHz X-Band Rx (Opt)   |  |
| Data Framing             | CCSDS TM/TC (NEN),<br>DVB-S2, Coherent Turn Around,<br>Ranging, PNT  | Others available 256Gbyte<br>Internal Data Storage<br>Memory Available |
| I/O                      | Ethernet (Data)<br>RS-422 UART (Status/Command)  | Others available   |
| Telemetry                | Temperature(s), Voltages, Current,<br>Radio status/control   |  |
| DC Power                 | 28Volts Input  |  |
| Encryption               | Software Based Encryption <ul style="list-style-type: none"> <li>• AES-256</li> </ul>                                      |  |
| Mechanical               | <ul style="list-style-type: none"> <li>• 92x183x36mm, 700grams</li> </ul>  |  |
| Environmental            | <ul style="list-style-type: none"> <li>• Full Specs -25C to 65C</li> <li>• NASA GEVS 7000, Shock, Vibe, EMC/EMI</li> </ul> | >30K rad TID<br>SEU Recoverable<br>5 year mission                      |