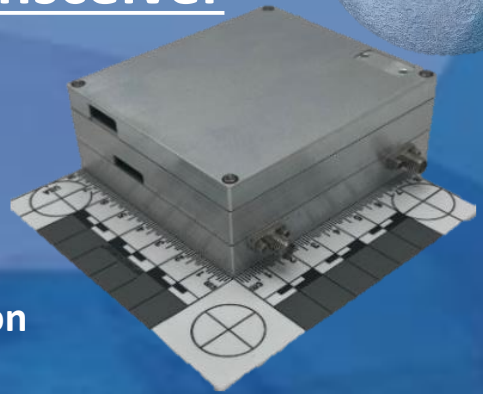


NSR-SDR-X/S Transceiver

Features:

- Full Duplex with integrated filters
- Coherent turn around mode
- 5.0Watts RF Transmit Power
- NASA NEN, SSC Space (USN), K-Sat
- NSA TSAB (Type-1) Encryption Option



Specification	Value	Comment
Tx Power 7900-8400MHz	5W RF 20W DC 0.1dB steps	Integrated filters
Waveforms -Tx -Rx	OQPSK, Up to 40Mbps CCSDS TC/TM, DVB-S2 BPSK, QPSK, Tone and PN Ranging	FEC: CC1/2, LDPC, Turbo, Others SSC-USA, K-Sat, AWS, Others
Rx 2025-2118MHz	-127dBm/4W DC 10Hz stepping across band	Full Duplex Low Phase Noise
Data Framing	CCSDS TM/TC (NEN), Coherent Turn Around, Ranging, PNT	Others available 256Gbyte Internal Data Storage Memory
I/O	Ethernet	RS-422, UART (6Mbps), Others available
Telemetry	Temperature(s), Voltages, Current	
DC Power	12Volts Input	28Volt Option
Encryption	<ul style="list-style-type: none"> • None • AES256 GCM Software based • Type-1 Encryption 	Non-ITAR Software Based Hardware Based
Mechanical	<ul style="list-style-type: none"> • 82x92x31mm, 350grams 	
Environmental	<ul style="list-style-type: none"> • Full Specs -25C to 61C • NASA GEVS 7000 	30K rad TID SEU Recoverable 5 year mission